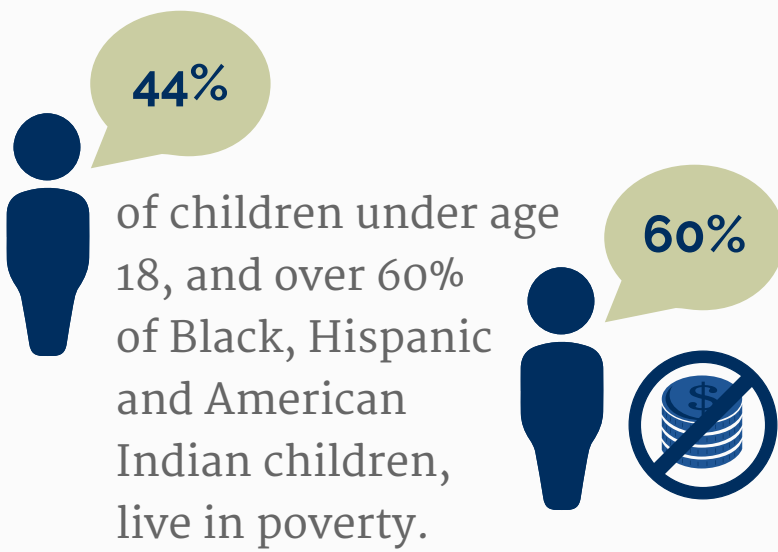


# SCHOOL PSYCHOLOGISTS PRACTICE

## SOCIAL JUSTICE IN SCHOOLS

School psychologists work to promote safe, welcoming learning environments for **ALL** students.

## SOCIAL JUSTICE MATTERS



Students of color are disproportionately **overrepresented** among children with disabilities.



Students with disabilities are **2-3** times more likely to be bullied than their nondisabled peers.



Black students are nearly **4** times more likely to be suspended than White students for similar behaviors.

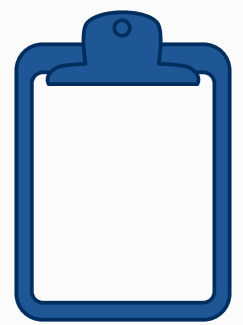
## SCHOOL PSYCHOLOGISTS CAN

Recommend strategies to reduce disproportionate practices



Design culturally responsive interventions

Conduct culturally competent assessments and consultation to reduce disproportionate special education referrals



Provide comprehensive mental and behavioral health services to meet the needs of ALL students

## APPLIED NASP PRACTICE MODEL DOMAINS



Consultation and Collaboration  
(Domain 2)



Schoolwide Practices to Promote Learning  
(Domain 5)



Diversity in Development and Learning  
(Domain 8)